

Ring of Fire–Ukulele

Drum Intro– 4m

Intro -4m

Strum G – Bo Diddley rhythm



Verse 1–8m– *Strum 1, 2&, 3, 4& (throughout)*

G,G,G,C G,G,G,G (repeat 3x)

Chorus–8m

D7 (4), C (2), G (2)

D7 (4), C (2), G (2)

G(4)

G, C, G, G

G, C, G, G

G(4)

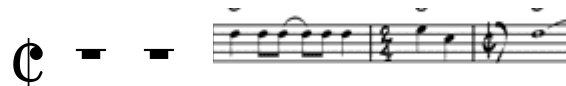
Break-4m (no strum)

Verse 2–8m

Group A: Chords

G,G,G,C G,G,G,G (repeat 3x)

Group B: Pluck the following 4 times. Please note that the second measure is a four beat (cut time) measure in our version. The whole note D is a quarter note in our version.



Chorus–8m

D7 (4), C (2), G (2)

D7 (4), C (2), G (2)

G(4)

G, C, G, G

G, C, G, G

G(4)

Chorus—8m

D7 (4), C (2), G (2)

D7 (4), C (2), G (2)

G(4)

G, C, G, G

G, C, G, G

G(4)

Outro—8m

Group A: Chord on G—Bo Diddley rhythm (played 8 times)

Group B: Pluck the phrase 4 times

All end on Chord G

Please let me know if you have any questions!

Lori Kilmer

lori.kilmer@sumnerschools.org

Students: Find my goofy mistake, note the time it happens on the video, tell me in March, and I'll draw a name for a prize. :)